

NOT TO SCALE
 DIMENSIONS ARE PROVIDED
 TO COMMUNICATE DESIGN
 INTENT. ACTUAL POST
 SPACING NEEDS TO BE
 VERIFIED IN FIELD

SUZANNE ZAHR INC.
 2441 SE 17TH AVE, SUITE 160
 MERCER ISLAND, WASHINGTON 98040
 T. 206 354 1567
 WWW.SUZANNEZAHR.COM

NIEDERMAN RESIDENCE
 REMODEL / ADDITION
 6800 96TH AVE SE
 MERCER ISLAND, WA 98040

PROJECT NUMBER
16017

ISSUED / REVISIONS	DATE

ISSUE DATE: 06.05.20
 DRAWN BY: LT
 CHECKED BY: SZ

POST DETAILS

SHEET NUMBER
SK-1

SUZANNE ZARR INC.
1405 17TH AVE S.W.
MERCER ISLAND, WASHINGTON 98040
T. 206.384.1198
WWW.SUZANNEZARR.COM

NIEDERMAN RESIDENCE
REMODEL / ADDITION
6800 96TH AVE SE
MERCER ISLAND, WA 98040

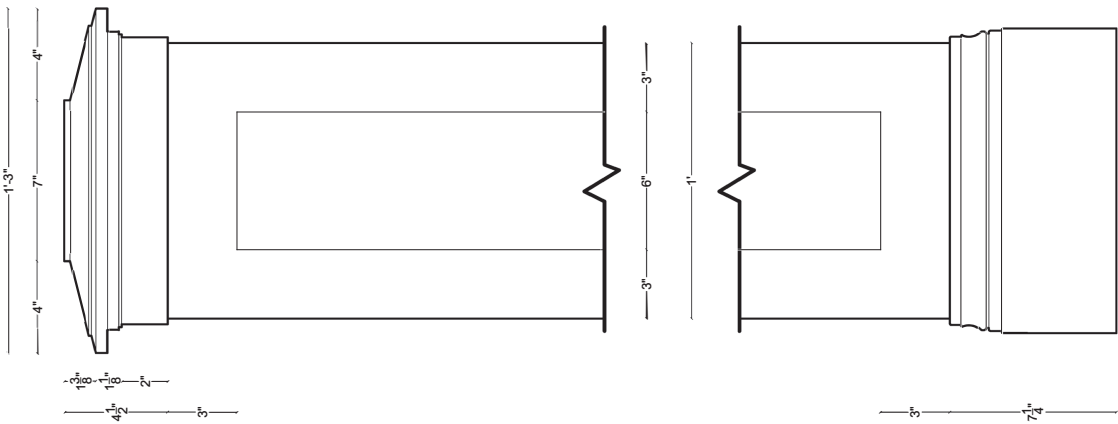
PROJECT NUMBER
16017

ISSUED / REVISIONS	DATE

DESIGN DATE: 08/03/2010
DRAWN BY: LIT
CHECKED BY: SZ

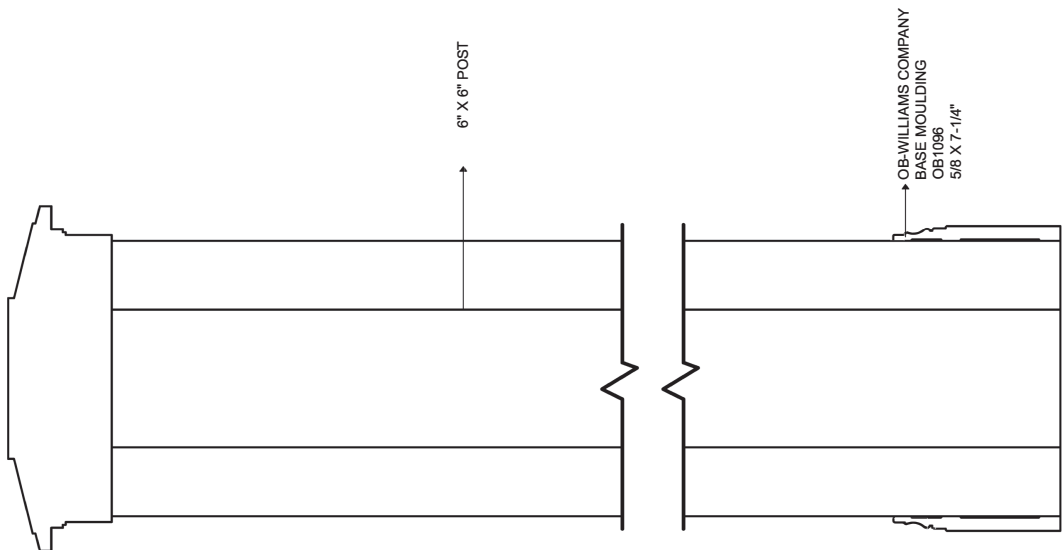
POST DETAILS

SHEET NUMBER
SK-2



NOT TO SCALE

POST DETAIL -
ELEVATION



POST DETAIL -
SECTION